

A Message from the Regional Director



The Mackay/Whitsunday Region has some big challenges ahead.

As a result of the recent Local Government amalgamations, Main Roads reviewed its district boundaries and adopted a regional approach to managing its road network.

These changes retain and reinforce Main Roads' long history of decentralised delivery and local decision-making, which allows our staff to make on-the-ground decisions that are the best for the Mackay/Whitsunday region.

Mackay/Whitsunday Region now encompasses the Isaac Regional Council, the Mackay Regional Council and the Whitsunday Regional Council. Main Roads will be working closely with stakeholders over the next six to 12 months to ensure the transition period is as smooth as possible.

Main Roads continues to work hard to manage the state's road infrastructure and to deliver exceptional service to Queenslanders living in the Mackay and Whitsunday area.

Ian Husband
Regional Director
Mackay District Office
Mackay/Whitsunday Region

Flood Recovery

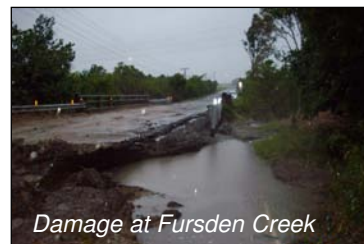
As Mackay residents rebuild after the worst floods in recent times, Main Roads has been working with RoadTek as well as local councils to repair flood damaged roads and restore access to the state-controlled road network.

Emergency repairs were completed quickly once flood waters had subsided. Load restrictions were in place for sometime following the floods to protect the road infrastructure from further damage.

Main Roads would like to thank the community, in particularly the transport industry, for their patience and understanding during this time.

Fursden Creek Flood Repairs

The Fursden Creek Bridge on Glenella Connection Road suffered severe damage during the flood event in February, effectively closing Mackay's vital Hospital Bridge commuter link.



Damage at Fursden Creek



Repairs at Fursden Creek

Main Roads' officers and RoadTek crews were on site as soon as flood waters subsided to carry out emergency repairs. Only five days after the floods, access was restored to the entire Hospital Bridge/Fursden Creek road link.

Major Project Updates

Hospital Bridge at Pioneer River



Excavating pier three – April 2008

The Hospital Bridge links the Bruce Highway at the southern entrance to Mackay City to North Mackay at Glenella. The bridge is an important commuter link in the Mackay Road network, especially during peak hour. The Hospital Bridge Replacement

Project includes the construction of a new bridge over the Pioneer River and a smaller bridge over Lagoon Creek as well as the new alignment continuing on from Lagoon Street.

The upgrade of the Lagoon Street alignment was completed in August 2007 and work on the Lagoon Creek Bridge was finished in February 2008. Pile driving works on the main bridge structure are underway on the south side of the river. This involves driving steel liners and pouring concrete into the liners to form piles. A sand platform (bund) is being constructed on the northern side of the river to undertake pile driving works in the main stream of the river.



Hospital Bridge project – looking south from Glenella over the Pioneer

The project is due to be completed in May 2009.

Total Project Cost \$33.6m

Forgan Bridge and Kooyong intersection

Construction of the new Forgan Bridge is due to commence in the coming weeks. The project will see the existing two-lane bridge replaced with a four-lane bridge that will be able to accommodate Mackay's growing traffic demands.

The Kooyong intersection will also be upgraded to help the network cope with the future traffic volumes from both the Forgan Bridge and the Joint Levee Road.

The project is due to be completed in May 2010.

Total Project Cost \$127.9m

Mackay-Bucasia Road

Mackay Bucasia Road is the only arterial road connecting the northern beaches community to Mackay City. The road is approximately 10km in length and carries approximately 18,000 vehicles per day. The northern beaches area has experienced high residential growth in the last few years.

The duplication of the Mackay-Bucasia Road to four lanes between Phillip Street and Holts Road began in September 2007 and will improve safety and efficiency of the main arterial link between Mackay and the northern beaches.

The project is due to be completed in November 2008.

Total Project Cost: \$17m



Work on Mackay-Bucasia Road Duplication Project – April 2008

Joint Levee Road

The Joint Levee Road is the construction of a new deviation alignment providing a combined road and flood mitigation levee.

The new road will run from Sams Road to the Kooyong intersection and once completed will improve safety, provide a flood mitigation levee bank for North Mackay residents and a dedicated heavy vehicle route to the Port that bypasses the residential areas of Malcomson Street and Evans Avenue.

The project is being constructed in three stages.

Stage 1 – construction of the embankment to half its final height.

Stage 2 – construction of the embankment to its full height.

Stage 3 – construction of the roadway.

Construction of Stage 1 commenced in October 2007 and is due to be completed by June 2008.

The embankment will then settle before Stage 2 commences in September 2008. Stage 2 is due to be completed by December 2008.

The final stage is due to commence in August 2009 and the entire project is expected to be completed by November 2009.

Total Project Cost: \$14.2m

Upgrading the Region's Vital Links

Bruce Highway

Works will take place to upgrade the intersection of the Bruce Highway with Farrelly's Lane/Schmidtke Road on the southern approach to Mackay at a cost of \$5.3 million. Sections of the Bruce Highway will also be duplicated to four lanes to accommodate future traffic volumes. This project will be funded under AusLink 2 program.

Peak Downs Highway

The Peak Downs Highway continues to be a vital link in the Central Queensland road network, providing access to Nebo, Clermont, Moranbah and the Central Queensland coalfields.

Widening of the pavement between Boundary



*Peak Down Highway:
Boundary Creek - Before*

Creek and Cut Creek is due to be completed in May 2008 at a cost of \$5.6 million. An additional \$1 million dollars will also be spent on widening the pavement east of Bee Creek as part of the Safer Road Sooner program.



*Peak Downs Highway:
Boundary Creek - After*

There will also be works on the Eton Range to replace guardrails

(\$400,000) and to construct an auxiliary lane (\$700 000) as well

as pavement rehabilitation at a section east of Eungella turn out (\$2.2 million).

Proserpine-Shute Harbour Road and Beach Road Intersection

This busy intersection will be upgraded to a roundabout at a cost of \$2.8 million. With more than 17000 vehicles using this road everyday, the works will accommodate future traffic needs as well as improve safety for vehicles accessing the adjacent streets of Beach Road, Manoka Drive and Stewart Drive. Work is planned to commence in late 2008.

Planning for the Future

The area continues to attract more and more people. Mackay is one of the fastest growing local government areas in Queensland, with an average annual population growth rate of 3.3% between 2001 and 2006 (compared to 2.4% for Queensland).

A mining boom is taking place in the Bowen Basin and this places demands on the road network.

Road challenges in the area include:

- operating a road network in an area with high rainfall and soils more suited to farming than roads
- meeting road needs of the expanding mining sector and increasing B-double and road-train traffic
- improving access to goods and services for a widely dispersed population
- managing the balance between the needs and expectations of rapidly growing provincial centres and rural communities
- population growth, along with the accompanying residential subdivision growth, is increasing public expectations for upgraded road infrastructure, especially as volumes of heavy vehicle use increases in response to freight transport demands
- acquisition of resources, such as quarry materials, to build and maintain existing infrastructure
- meeting the needs of local governments in the area.

In planning for the future, these challenges will be addressed. Safety will remain a top priority along with efficient travel conditions. Special attention is also paid to long distance travellers, targeting

driver fatigue and routes with high levels of heavy vehicle growth and freight movements.

Planning for the Future

More than \$1.3 million dollars has been allocated for specific safety improvements to roads throughout the Mackay/Whitsunday Region.

\$1.1 million will be spent in 2009-10 for reconfiguring turning lanes and widening at the intersection of Nebo Road (Bruce Highway), Peak Downs Highway and Archibald Street at the City Gates in Mackay.

Another \$250,000 has been allocated for fatigue management measures on the Peak Downs Highway, 30km west of the Fitzroy Developmental Road intersection. Works include installing a motorist stopping place and parking bay.

The Safer Roads Sooner program is funded by revenue from traffic camera fines boosted by additional funds from Main Roads. This year the package is made up of \$31 million in traffic camera fines and \$23 million from Main Roads.

The Safer Roads Sooner program is aimed at addressing the road toll and reducing the number of people who sustain serious injuries in road crashes.

Through this program, fines collected from motorists caught doing the wrong thing are going straight back into life-saving road improvements.

The Safer Roads Sooner program focuses on reducing the road toll and the huge social and financial impact of road trauma.

For More Information:

Phone: 4951 8555 Fax: 4951 8500

Email:

www.mackay@mainroads.qld.gov.au